

# Homer Tsunami Inundation Map Visual Aid (1 of 4)

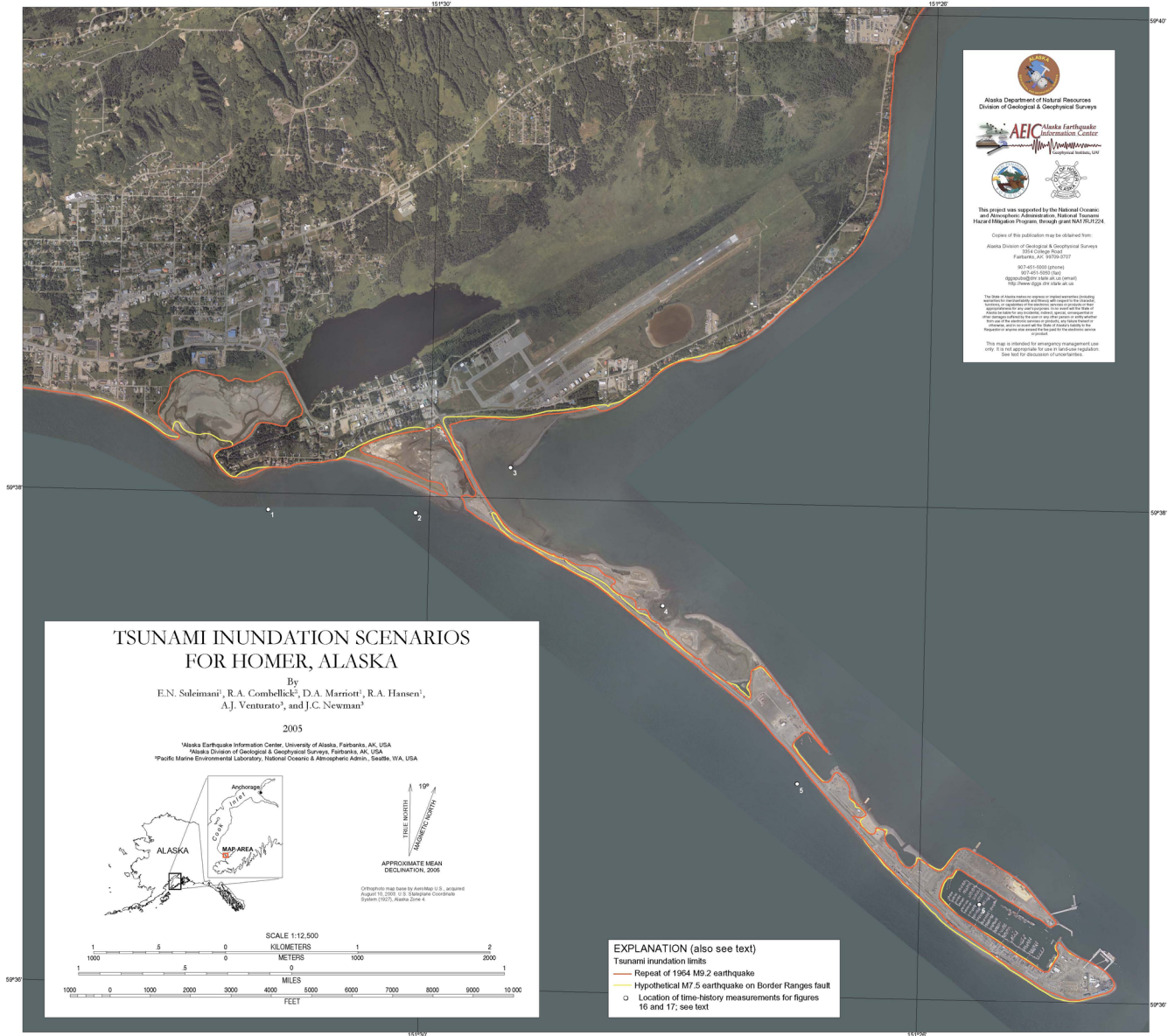
Grades

9-12



A JOINT PUBLICATION OF THE ALASKA DIVISION OF GEOLOGICAL & GEOPHYSICAL SURVEYS  
AND THE GEOPHYSICAL INSTITUTE, UNIVERSITY OF ALASKA FAIRBANKS,  
IN COOPERATION WITH KENAI PENINSULA BOROUGH AND CITY OF HOMER

ADGGS REPORT OF INVESTIGATIONS 2005-2  
SULEIMANI AND OTHERS, 2005, SHEET 1 OF 2  
*Explanatory text accompanies maps*



Alaska Department of Natural Resources  
Division of Geological & Geophysical Surveys

**AEG** Alaska Earthquake  
Information Center  
Geophysical Institute, UAF

This project was supported by the National Oceanic and Atmospheric Administration, National Tsunami Hazard Mitigation Program, through grant NA17RJ0224.

Copies of this publication may be obtained from:  
Alaska Division of Geological & Geophysical Surveys  
9304 College Road  
Fairbanks, AK 99707-0177  
907-451-5000 (phone)  
907-451-5000 (fax)  
907-451-2000 (internet)  
http://www.dgg.alaska.gov

The State of Alaska retains all rights in copyright including reproduction and distribution of this report for non-commercial purposes. This report is prepared for the State of Alaska and is not to be used for any other purpose without the express written permission of the State of Alaska. Any third party who reproduces or distributes this report without the express written permission of the State of Alaska is liable for any damages or costs incurred by the State of Alaska.

This map is intended for emergency management use only. It is not appropriate for use in land-use regulation. Use text for description of inundation.

### TSUNAMI INUNDATION SCENARIOS FOR HOMER, ALASKA

By  
E.N. Suleimani<sup>1</sup>, R.A. Combelick<sup>2</sup>, D.A. Marriot<sup>1</sup>, R.A. Hansen<sup>1</sup>,  
A.J. Venturato<sup>3</sup>, and J.C. Newman<sup>3</sup>

2005

<sup>1</sup>Alaska Earthquake Information Center, University of Alaska, Fairbanks, AK, USA  
<sup>2</sup>Alaska Division of Geological & Geophysical Surveys, Fairbanks, AK, USA  
<sup>3</sup>Pacific Marine Environmental Laboratory, National Oceanic & Atmospheric Admin., Seattle, WA, USA

APPROXIMATE MEAN DECLINATION, 2006

Orthophoto Map taken by AerialMap U.S., acquired August 16, 2005. U.S. National Plane Coordinate System (NAD 83), Alaska Zone 4.

SCALE 1:12,500

1 0 1 2  
1000 0 1000 2000 3000 4000 5000 6000 7000 8000 9000 10 000  
KILOMETERS METERS  
1 0 1  
1000 0 1000 2000 3000 4000 5000 6000 7000 8000 9000 10 000  
MILES FEET

**EXPLANATION (also see text)**  
 Tsunami inundation limits  
 — Repeat of 1964 Mw 9.2 earthquake  
 — Hypothetical M7.5 earthquake on Border Ranges fault  
 ○ Location of time-history measurements for figures 16 and 17; see text